

# <sup>13</sup>Carbon-Isotope Decrease in Annual-Rings of Twentieth-Century Trees

Morley Pandula de Silva

Institute of Chemistry-2, Nuclear Research Center,  
D-5170 Jülich

Z. Naturforsch. **34 c**, 644–646 (1979); received March 16/  
April 17 (1979)

Fossil CO<sub>2</sub>, Biospheric CO<sub>2</sub>, Juvenile Effect, Tree-Specific Value

The steadily increasing global carbon dioxide concentration is further recognized through the decreasing trend of <sup>13</sup>C/<sup>12</sup>C isotopic ratio in the annual rings of twentieth-century trees. The decrease is averaged to about 0.012 per mil per year which is attributed not only as due to anthropogenic fossil-fuel burning but also to the man's impact on the land pattern.

## Introduction

The longterm increase of carbon dioxide in the atmosphere resulting from fossil-fuel burning (Fossil CO<sub>2</sub>) and through man's changing of landbiota (Biospheric CO<sub>2</sub>) is known to be registered in the wood of tree-rings. Both fossil-fuel and biospheric carbon dioxide are marked with a <sup>13</sup>C isotope deficit of about –18‰ (on the PDB scale) against the background atmospheric carbon dioxide. The fossil-fuels are however completely decayed with respect to <sup>14</sup>C isotope. A decrease of <sup>14</sup>C/<sup>12</sup>C in the atmospheric carbon dioxide therefore indicates an increase through fossil-fuel sources only, whereas <sup>13</sup>C/<sup>12</sup>C decrease reflects both anthropogenic and biospheric emissions into the atmosphere. The trees absorb carbon dioxide from the atmosphere during the process of photosynthesis and build up sugars which are converted among others into the wood components like cellulose, hemicellulose, lignin etc. Each ring therefore gives a representative record of the isotopic composition of the atmosphere at the time of the formation of the ring.

## Method

A single wood component (cellulose in this case) is used throughout the investigation since each component has its characteristic carbon isotope ratio and also the relative fractions of the components in each

Reprint requests to Dr. M. P. de Silva.  
0341-0382/79/0700-0644 \$ 01.00/0

ring may not be constant over the entire age of a tree (Wagener and Rebello [1]). Two ring samples are used throughout. Cellulose (which is 40–50% of whole wood) is extracted out of the wood according to methods described by Sohn and Reiff [2] and Kürschner and Popik [3]. In this way an acid hydrolysis of the cellulose and the use of organic reagents are avoided. The cellulose is burnt to carbon dioxide gas in a special combustion apparatus (modified after Craig, [4]) in an atmosphere of pure oxygen at a constant pressure of 150 torr at 800 ± 50 °C. The isotope ratios are measured in a double focussing mass-spectrometer Micromass 602C in comparison with a standard carbon dioxide gas of known isotopic composition. The relative isotopic change is expressed in conventional δ<sup>13</sup>C units

$$\text{where } \delta^{13}\text{C} (\text{‰}) = \frac{(^{13}\text{C}/^{12}\text{C})_{\text{wood}}}{(^{13}\text{C}/^{12}\text{C})_{\text{standard}}} - 1 \times 1000.$$

All <sup>13</sup>C data are converted to the PDB scale because of its wide usage as the reference scale.

## Results and Discussion

The analysed trees (a total of 7) came from three different research Stations in North Carolina USA. The exact locations and their climatic characteristics are extensively described in de Silva [5]. The trees were so selected that they were not influenced by any unwanted local disturbances which may cause anomalous <sup>13</sup>C oscillations. For each analysed tree the δ<sup>13</sup>C values over its entire time of record (1900–1975) were calculated as deviations from its tree-specific value which is the average δ<sup>13</sup>C for the period 1930–1959. This period is selected arbitrarily but however any anomalous values due to juvenile and any possible aged effects are in this way avoided. The tree specific δ<sup>13</sup>C values are given in Table I.

Table I. Tree-specific δ<sup>13</sup>C-values of the analysed trees and their localities in North-Carolina, USA

Tree art	Locality	δ <sup>13</sup> C <sub>PDB</sub>
1. <i>Pinus serotina</i>	Wilmington	– 26.40
2. <i>P. virginiana</i>	Reidsville	– 25.29
3. <i>Populus alba</i>	Reidsville	– 23.75
4. <i>Quercus alba</i>	Reidsville	– 23.89
5. <i>Q. rubra</i>	Reidsville	– 25.24
6. <i>Q. rubra</i> var. <i>borealis</i>	Waynesville	– 23.73
7. <i>Q. alba</i>	Waynesville	– 25.40



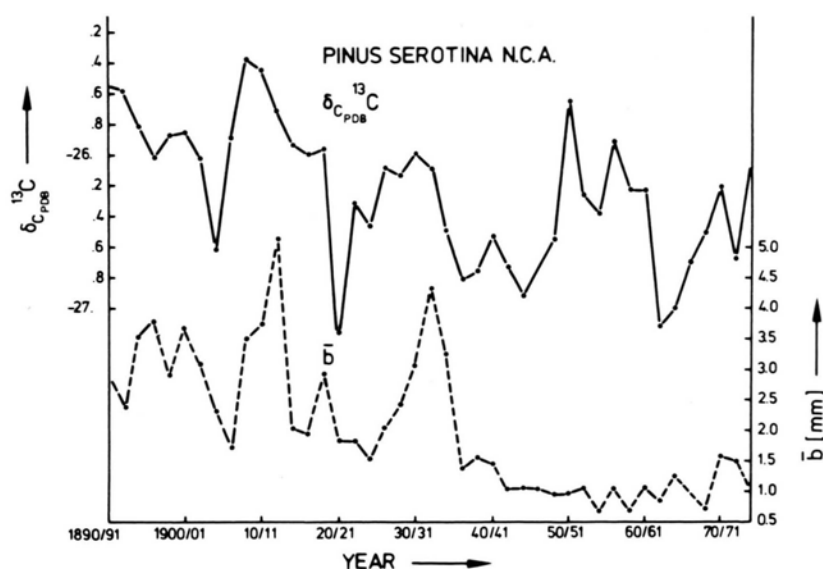
Dieses Werk wurde im Jahr 2013 vom Verlag Zeitschrift für Naturforschung in Zusammenarbeit mit der Max-Planck-Gesellschaft zur Förderung der Wissenschaften e.V. digitalisiert und unter folgender Lizenz veröffentlicht: Creative Commons Namensnennung-Keine Bearbeitung 3.0 Deutschland Lizenz.

Zum 01.01.2015 ist eine Anpassung der Lizenzbedingungen (Entfall der Creative Commons Lizenzbedingung „Keine Bearbeitung“) beabsichtigt, um eine Nachnutzung auch im Rahmen zukünftiger wissenschaftlicher Nutzungsformen zu ermöglichen.

This work has been digitalized and published in 2013 by Verlag Zeitschrift für Naturforschung in cooperation with the Max Planck Society for the Advancement of Science under a Creative Commons Attribution-NoDerivs 3.0 Germany License.

On 01.01.2015 it is planned to change the License Conditions (the removal of the Creative Commons License condition “no derivative works”). This is to allow reuse in the area of future scientific usage.

Diagram 1.  $\delta^{13}\text{C}$  decrease in *Pinus serotina* during the period 1890–1975 and the corresponding ring widths. The juvenile effect is to be observed during the period 1890–1910.



The trees at their young stages are known to show decreasing  $^{13}\text{C}$  values due to reabsorption of the respiratory carbon dioxide which is depleted in  $^{13}\text{C}$  isotope in comparison to atmospheric back-ground carbon dioxide. As the tree grows the mixing of the respiratory and the atmospheric carbon dioxide under the tree canopy is enhanced and the tree begins to register the atmospheric carbon dioxide. This effect is to be seen in diagram 1.

All samples were taken at a height of about one meter from the ground. It is shown however that the  $\delta^{13}\text{C}$  variations of different samples taken at varying heights from the same tree but with the same number of rings starting from the pith, lie within the experimental range of error (5), (see Table II). This indicates that there is no noticeable change in the isotopic fractionation as the distance between the place

of sugar production and its place of deposition in the annual-rings along the trunk increases. This is to be expected if the sugars are transported through the phloem sieve tubes according to a mass transfer mechanism. The radius of investigation is found to be of less significance contrary to earlier observations (de Silva [5]).

Diagram 2 shows the trend of the  $^{13}\text{C}$  decrease for this century as obtained by averaging the  $\delta^{13}\text{C}$  data of all analysed trees (all  $\delta^{13}\text{C}$  values are given in de Silva [5]). The form of the curve confirms former measurements at other regions (Farmer and Baxter [6], Freyer and Wiesberg [7], Stuiver [8]). An overall  $^{13}\text{C}$  decrease is to be recognised with a well marked interruption during the period 1940–1955. The mean  $\delta^{13}\text{C}$  during the periods 1900–1920, 1930–1940, 1955–1970 decreases with almost linear slopes.

An increasing trend is to be seen between 1940–1955 interval, a trend observed by many other

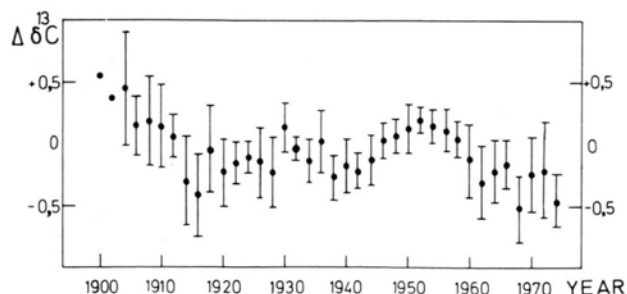


Diagram 2. Averaged  $\delta^{13}\text{C}$  values of 7 trees from North Carolina, USA, plotted as deviations from the average of their tree-specific values calculated for the period 1930–1959.

Table II. Average  $\delta^{13}\text{C}$ -values of samples taken at three different heights from the stem of *Pinus sylvestris*. Each sample includes twenty-five rings counted from the pith towards the bark.

Position of sample (distance above ground)	$\delta^{13}\text{C}_{\text{PDB}}$
1 meter	$-24.84 \pm 0.11$
2 meters	$-24.89 \pm 0.13$
3 meters	$-24.79 \pm 0.18$

authors (Stuiver [8]). The exact cause of this effect is not established but increasing global temperatures which reached their maximum in 1940 could have caused a reflux of ocean carbon dioxide into the atmosphere and along with a  $^{13}\text{C}$  enrichment.

When fitted with a linear regression curve a  $^{13}\text{C}$  decrease of 0.012‰ per year is observed. Extrapolation upto 1850 gives a total  $^{13}\text{C}$  decrease of -1.8‰ for the period of industrialisation. This decrease exceeds what could be attributed alone to the fossil-fuel emissions of carbon dioxide into the atmosphere even if 50% of the excess carbon dioxide dissolves in the ocean. Therefore other carbon dioxide emission sources have to be recognised. According to Wilson [10] an almost world-wide explosion of pioneer agri-

culture during the latter half of the nineteenth century released one and a half times the total amount released through fossil-fuel burning upto 1950. The fraction of this biospheric carbon dioxide that remained in the atmosphere depleted the  $\delta^{13}\text{C}$  of the atmosphere by 0.9‰. It is clear that man's contribution to the increasing carbon dioxide concentrations through agricultural practices is of comparable magnitude to that released by the consumption of fossil-fuels. However, before we can draw conclusions to their amounts more data extending to the pre-industrial time are needed. Furthermore the carbon dioxide exchange processes between the atmosphere, biosphere and ocean should be reviewed.

- [1] A. Rebello and K. Wagener, Environmental Biogeochemistry, (J. O. Nriagu, ed.), Vol. 1, pp. 13-23, Ann Arbor Science Publishers, Inc., 1976.
- [2] A. W. Sohn and F. Reiff, Papierfabrikant 40, 1-7 (1942).
- [3] K. Kürschner and M. G. Popik, Zur Analyse von Hölzern. Holzforschung, Mitteilungen zur Chemie, Physik, Biologie und Technologie des Holzes, Band 16, Heft 1, Technischer Verlag, Herbert Cram, Berlin 1962.
- [4] H. Craig, Geochim. Cosmochim. Acta 3, 53-93 (1953).
- [5] M. P. de Silva,  $^{13}\text{C}$ -Variationen in Baumjahresringen als Folge des anthropogenen  $\text{CO}_2$ -Anstiegs der Atmosphäre: Untersuchung des Einflusses von Klimaparametern. Ph. D. Thesis, RWTH, Aachen, pp. 107, 1978.
- [6] J. G. Farmer and M. S. Baxter, Nature 247, 273-275 (1974).
- [7] H. D. Freyer and L. Wiesberg, Proc. FAO/IAEA Symp. Isotope ratios as pollutant source and behaviour indicators, pp. 49-62, Vienna, IAEA 1974.
- [8] M. Stuiver, Science 199, 253-258 (1978).
- [9] H. D. Freyer, On the  $^{13}\text{C}$  record in tree rings. 1.  $^{13}\text{C}$  variations in northern hemispheric trees during the last 150 years. Preliminary evaluation of the past  $\text{CO}_2$  increase. Tellus, 1978.
- [10] A. T. Wilson, Nature 273, 40-41 (1978).